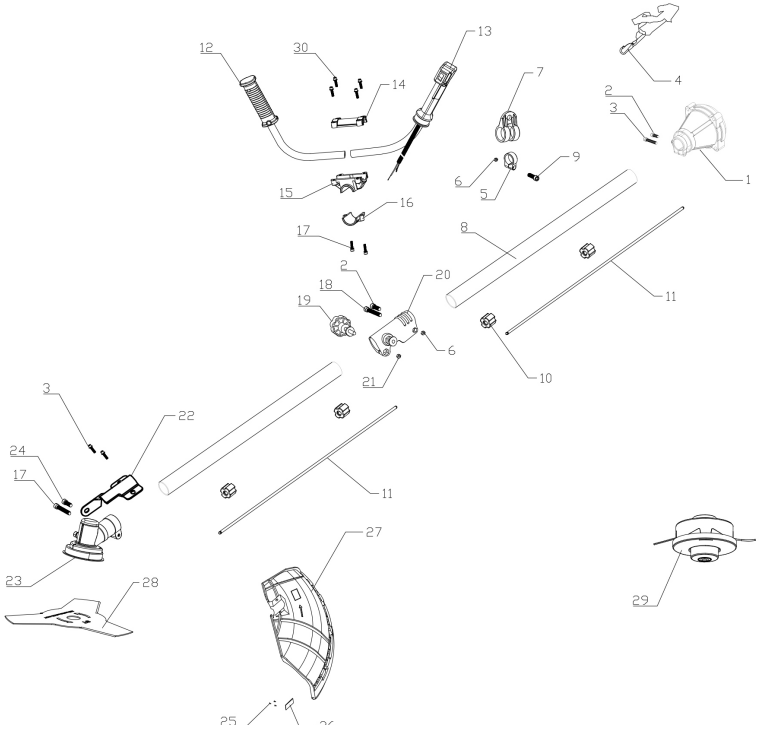


PARTS LIST RD-GBC24

No.	description	qty	mark	No.	description	qty	mark
A				C			
1	crankshaft	1		1	tank cap	1	
2	key3*5*13	1		2	tank pressplate	1	
3	piston ring	2		3	screw M5*20	2	
4	piston	1		4	shock	1	
5	piston pin ring	2		5	tank protector	1	
6	bearing	1		6	tank assy	1	
7	piston pin	1		D			
8	gasket	1		1	gasket	1	
9	cylinder	1		2	intake pipe	1	
10	spark plug	1		3	screw M5*30	2	
11	cover (back)	1		4	gasket	1	
12	screw ST4*16	3		5	carbureter	1	
13	screw M6*20	4		6	carbureter stander	1	
14	gasket	1		7	spring	1	
15	muffler	1		8	gasket 5	1	
16	screw M6*55	2		9	screw M5*55	2	
17	screw M5*12	1		10	sponge	1	
18	cover (front)	1		11	air filter cover	1	
B				E			
1	crankshaft case(L)	1		1	crankshaft case(R)	1	
2	bearing 6202	1		2	bearing 6202	1	
3	seal 15*30*7	1		3	pin $\phi 5 \times 10$	2	
4	pin $\phi 5 \times 10$	2		4	gasket	1	
5	screw M5*35	4		5	seal 12*22*7	1	
6	flying wheel	1		6	driver plate	1	
7	nut M8*1	1		7	gasket	1	
8	gasket 8	2		8	starter assy	1	
9	clutch assy	1		9	screw M5*20	4	
10	gasket 10	2					
11	screw M8*9.8*24	2					
12	side cover	1					
13	screw M5*25	4					
14	screw M5*20	2					
15	coil	1					
16	clasp	1					
17	flameout line	1					

Exploded view drawing RD-GBC24



PARTS LIST RD-GBC24

No.	discription	qty	mark
1	clutch case assy	1	
2	screw M5X12	1	
3	screw M6X25	3	
4	belt	1	
5	small ring	1	
6	Nut M5	2	
7	big ring	1	
8	alu pipe	2	
9	screw	1	
10	bearing	4	
11	shaft	2	
12	left handle	1	
13	right handle	1	
14	handle holder(UP)	1	
15	handle holder(Middle)	1	
16	handle holder(Down)	1	
17	screw M5X25	3	
18	screw M5X25	1	
19	screw M6X25	1	
20	fast linker	1	
21	nut M6	1	
22	protector pressplate	1	
23	gearbox assy	1	
24	screw M5X14	1	
25	screw ST4.2X10	3	
26	line knife	1	
27	protector	1	
28	3T blade	1	
29	Nylon cutter	1	
30	screw M5X20	4	